



INSTALLATION INSTRUCTIONS

MULTILAYER

FILLIS LINE

GENERAL

- a. Before proceeding to the flooring installation, always make sure that the climatic conditions of the room are suitable:
 - Temperature: 15⁰C -20⁰C
 - Relative Humidity: 45%-60%
- b. It is recommended to store the floor (in the boxes) in the room that will be installed, for at least 24 hours before installation for acclimatization.
- c. In cases of installation over underfloor heating, follow the instructions of the manual «Underfloor Heating – Technical Instructions for Underfloor Heating»
- d. In cases of defective substrate (cement screed, tiles, old wooden floor), follow the instructions of the manual «Solutions for Problematic Substrates»

INSTALLATION INSTRUCTIONS FILLIS LINE (PREFINISHED ENGINEERED FLOORS OF MULTIPLE MAYERS)

FILLIS line planks can be installed with one of the two methods:

- ✓ **Glued** on any even and flat surface
- ✓ **Floating** on any even and flat surface

GLUED ON ANY EVEN AND FLAT SURFACE

1: Measure the moisture level of the cement screed, by using a hygrometer (eg. MAPEI). It must not exceed 2% (*see instructions of the hygrometer*)

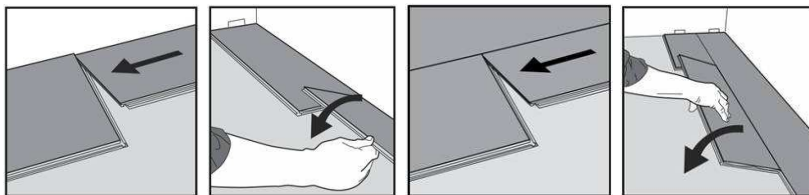
2: Check the hardness of the cement by rubbing it with the back side of a new pencil. The cement screed must not be powdered

3: Measure the flatness of the cement, by using a 2 meter aluminum lath: The height differences must not exceed 4mm, at a distance of 1 meter.

4: Clean thoroughly and prime the cement by using *ECO PRIM PU 1K*

5: Apply *ULTRABOND ECO S955 1K* glue on the surface, using the special spatula

6: FILLIS boards are joined together with clic system: Bring the long side in absolute contact with the side of the plank that is waiting at an angle of 15° – 20° and push towards the floor. In order to join the small side, hit the board by using the special tool



NOTES

- For better aesthetic results, mix the boards from different boxes
- Boards must not lean on any vertical surface of the room. Always maintain a distance of 10mm
- The suitability of the existing floor should be checked as following:
 - I. If the cement screed is flat, apply the *ULTRABOND ECO S955 1K* glue, using the special spatula
 - II. If the cement screed has height differences up to 6mm, apply the glue like toothpaste over the boards
 - III. If the cement screed has height differences more than 7mm, level it by using self-levelling compounds (*ULTRAPLAN / ULTRAPLAN MAXI*)
- Use a piece of more than 30cm to join the small sides
- Choose the right profile for the finishing

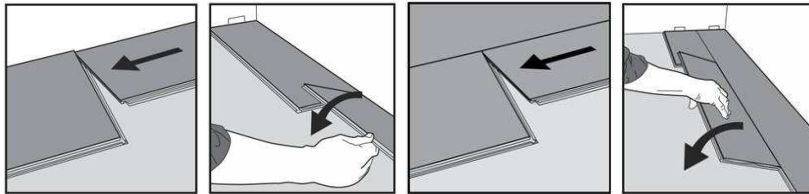
FLOATING ON ANY EVEN AND FLAT SURFACE

1: We choose one of the following **RELMAT** underlays:

- *CELLMAT* for installations with no specific requirements
- *R-FLEX* for increased moisture
- *ACOUSTICORK* for thermal/sound insulation
- *ELASTILON* for underfloor heating (*see Installation Instructions ELASTILON*)

2: Apply the selected underlay

3: **FILLIS** boards are joined together with clic system: Bring the long side in absolute contact with the side of the plank that is waiting at an angle of 15° – 20° and push towards the floor. In order to join the small side, hit the board by using the special tool



NOTES

- For better aesthetic results, mix the boards from different boxes
- Boards must not lean on any vertical surface of the room. Always maintain a distance of 10mm
- The suitability of the existing floor should be checked as described above
- Use a piece of more than 30cm to join the small sides
- Choose the right profile for the finishing